

Warranty

Mimetas warrants the OrganoFlow® L against defects in materials and workmanship for 2 years. Within this time period, Mimetas will replace or repair, without charge to the original purchaser, any defective part. The warranty is void if the product is defective due to product accident, product modification, exposure to radiation other than for sterilization, connection to an improper electrical supply, lack of proper maintenance, contamination, improper installation or misuse. The warranty shall also not apply to defects arising from fire, flood, lightning or other conditions unrelated to correct operation of the product. Warranty can be covered by, at Mimetas' election, (1) refund of the original purchaser's purchase price for the product (2) repair of the product, or (3) replacement of the product or defective parts. Evidence of purchase by the original purchaser is required. Mimetas may also request documentation of proper maintenance, if applicable. Mimetas makes no other warranty, expressed or implied, with respect to its products. **MIMETAS MAKES NO WARRANTY REGARDING THE MERCHANTABILITY OF THE PRODUCTS OR THEIR SUITABILITY OR FITNESS FOR ANY PARTICULAR PURPOSE OF USE.**

Mimetas shall not be liable for, indirect, special, incidental or consequential damages of any nature. Any recovery for any claim shall be limited to the original purchase price for the product. If the OrganoFlow® L is used in a manner not specified, the protection may be impaired.

Terms & conditions

The purchase and delivery are subject to the General Terms and Conditions of Delivery, Purchase and Use of Mimetas B.V.
www.mimetas.com/terms-conditions

Contact info

For Mimetas product service information or support, please contact us by any means:

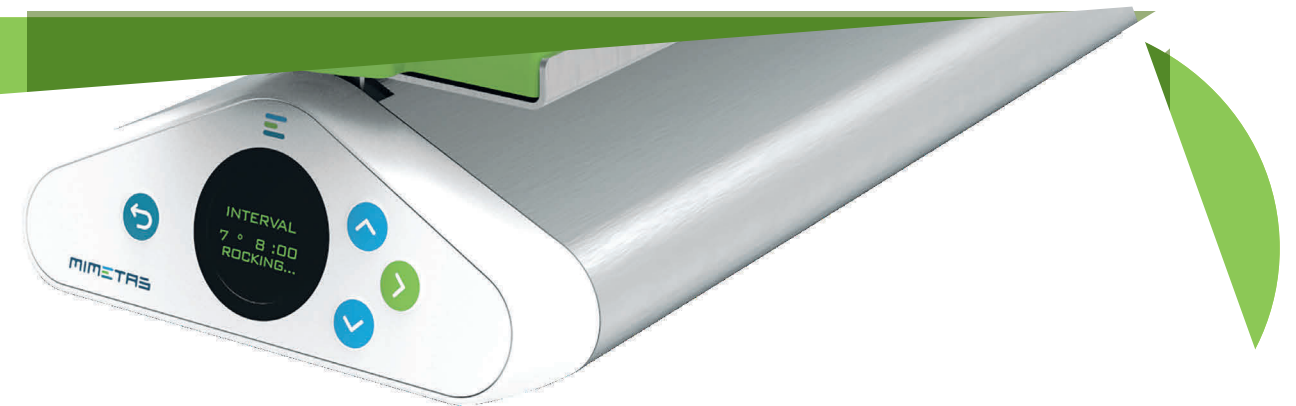
Telephone: **+31 (0)85 888 31 61**
E-mail: **support@mimetas.com**
Main office: Mimetas B.V.
JH Oortweg 19,
2333CH Leiden
The Netherlands

MIMETAS

Instruction manual for safe use and warranty of **OrganoFlow® L**

Package contents

- OrganoFlow® L
- Green tray inlay
- Power adapter (230/110 V AC to 12 V DC) and wall socket connectors
- Instruction manual

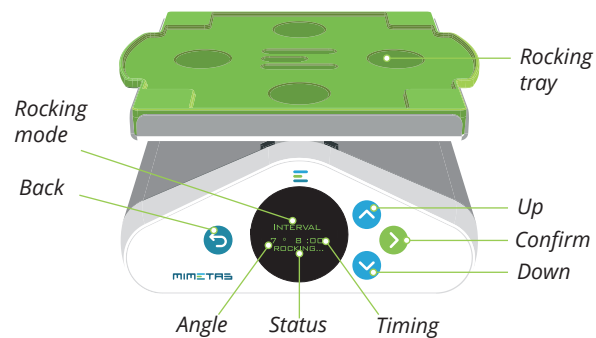


This document contains the necessary instructions to install and safely operate the OrganoFlow®. It is highly recommended to read this manual before setup and operation.

Getting started

Please follow the brief instructions below to install the OrganoFlow®.

1. After unboxing, place the OrganoFlow® on a levelled surface.
2. Plug in the AC/DC power adapter and switch on the OrganoFlow® by using the ON/OFF switch located at the back of the instrument.
3. Press the confirm button to calibrate the OrganoFlow®.
4. Use the up and down buttons to choose between interval or continuous mode. In interval mode, the OrganoFlow® will move the platform to the selected rocking angle and will remain at this position for the selected interval duration. In continuous mode, the OrganoFlow® will move the platform during the selected interval while never being static.
5. Choose the rocking angle and the interval using the up and down buttons.
6. Press the confirm button to start rocking.
7. Before installation of the OrganoFlow® in an incubator, make sure to switch it off and sterilize it as described in the service and maintenance section.



Service and maintenance

The OrganoFlow® is designed to provide long lasting operation without any maintenance. No technical user maintenance is required and no serviceable parts are inside the OrganoFlow®. We recommend cleaning the OrganoFlow® on regular basis to ensure device sterility. The OrganoFlow® can be safely cleaned and sterilized by spraying and wiping with 70% ethanol. Do not use any other means of sterilization. If necessary, the rocking tray can be removed by unlatching the small screw at the back of the platform and lifting the tray. Always make sure the power is disconnected from the OrganoFlow® before cleaning.

Intended use

The OrganoFlow® is intended for research applications only and is specifically developed for use in combination with the OrganoPlate® platform only. Besides its use in general lab conditions, the OrganoFlow® is designed to function in CO₂ incubators at temperatures between 5 and 40 °C. For indoor use only.

Safety regulations & standards

Mimetas hereby declares under its sole responsibility that the construction of this product conforms in accordance with the following standards:

Safety standards:

- NEN-EN-IEC-61010-1
- Safety requirements for electrical equipment for measurement, control and laboratory use.

EMC standards:

- NEN-EN-IEC-61000-3-2/3-3
- NEN-EN-IEC-61326-1
- RoHS compliant

Associated guidelines:

- EMC directive 2014/30/EC
- RoHS directive 2015/863
- RoHS2 directive 2011/65/EU
- Low Voltage Directive 2006/95/EC
- CE approved
- FCC approved

Product specifications OrganoFlow® L

Dimensions LxWxH (cm)	45x16x8
Weight (kg)	2.4
Power consumption (W)	4.7
Maximum load	16 OrganoPlates®
Maximum load (kg)	1,6
Sliding tray	yes
IP rating housing	IP54
Tilt angle	0° to +25°
Modes of operation	Interval or continuous
Tilting interval	5s - 999 min
Operating conditions	Up to 40°C and 95% RH (non-condensing)
Storage conditions	-20 °C to +65 °C at a max. relative humidity of 95%

Safety instructions

WARNING! Switch off the power and disconnect the power supply before lifting or moving the OrganoFlow® for service or maintenance to avoid electrical shock.

WARNING! DO NOT use the OrganoFlow® in hazardous conditions or expose it to hazardous materials/chemicals for which the device was not intended.

DO NOT lift the OrganoFlow® by the rocking tray to avoid mechanical damage.

WARNING! By putting too much force or weight on the OrganoFlow®, the motor will move through its defined motor steps, resulting in an offset of the rocker angle. Please recalibrate the OrganoFlow® by restarting the device (toggle power switch OFF and ON). If an offset in calibration would occur without the user's notice, the OrganoFlow® would rock

asymmetrically (for example, a 1 degree offset would result in 8 degrees rocking to the left and 6 degrees to the right when using an angle setpoint of 7 degrees). Fortunately, this angle offset does not influence your experiment in any way, because the fluid flow rate in the OrganoPlate® is identical between symmetrical and asymmetrical rocking.

DO NOT insert fingers into any pinch points.

DO NOT immerse the OrganoFlow® in liquid for cleaning.

DO NOT place the power adapter inside a CO₂ incubator.

DO NOT replace the supplied adapter by any other adapter. If necessary, please contact Mimetas for support.

DO NOT place multiple devices in close proximity to one another (main bodies touching). This could allow the metal trays to run into each other, potentially causing mechanical damage to your OrganoFlow®.

DO NOT place the OrganoFlow® in front of the temperature sensor of the incubator.

DO NOT spray ethanol directly into the cooling fan at the back while cleaning.

DO NOT use any other means for sterilization than 70% ethanol.

DO NOT remove the back label and open the OrganoFlow® for mechanical or electrical modifications. When your device shows signs of mechanical or electrical modifications or damage not related to normal laboratory use, warranty is void.

DO NOT put more than 4 OrganoFlow® L devices in a single incubator to prevent overheating of your cultures, and distribute them evenly inside the incubator.

DO NOT place tissue culture plates behind the OrganoFlow®. The air flow created by the inbuilt fan could negatively affect your culture.

DO NOT place the OrganoFlow® too close to the back wall of the incubator to make sure the airflow of the inbuilt fans is not impeded. Leave at least 3 cm (>1 inch) of space available.